

1 Corten steel cladding



4 Flat metal cladding: Silver



7 External Plant/ Storage Silos



2 Acoustic Louvers
Colour: Anthracite
(to match wall cladding)



3 Metal Roller Shutter Doors



BS.10E55:
Aztec Yellow



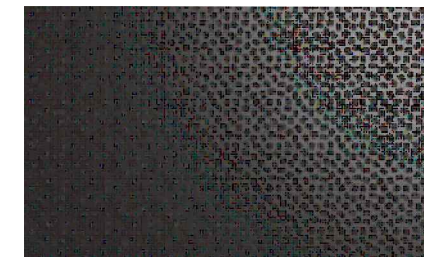
5 Reglit etched glass planks



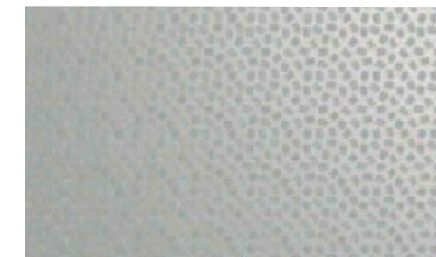
6 Profiled metal cladding: Anthracite



8 Reglit "Rainbow Range" glass planks




HPS200 Ultra
Colourcoat Cladding
RAL 7016 Anthracite
Walls




HPS200 Ultra
Colourcoat Cladding
RAL 7038 Goosewing Grey
Roofs, Plant

To be read in conjunction with drawing no.s 14113 PL 08 - 13: building elevations
Cladding Details
Energy Recovery Facility, East Ayrshire



72A Water Lane,
Wilmslow, Cheshire, SK9 5BB
01625 251644
office@fob-design.com www.fob-design.com

REV	DATE	BY	DATE	BY
Copyright of fob design, all rights reserved. All information contained within this drawing remains the property of fob design. No information should not be reproduced in whole or part or modified without written consent of fob design. No information within this drawing should be modified or duplicated or presented in any other form without written consent of fob design.				
BARR ENVIRONMENTAL				
ENERGY FROM WASTE				
KILLOCH				
Cladding Specification				
Drawn	NP	Status	PL	Date
Checked	IM	Original	A3	Scale
				02/04/14
				NTS
14113-PL14				